



Integrated Resource Management, Inc. (IRM) is comprised of water resource professionals with extensive experience providing solutions to water and wastewater issues in both the private and public sectors.

IRM was established as a resource consulting firm dedicated to providing practical problem-solving techniques to water-related issues. During the past 14 years, IRM has worked with a variety of companies to provide resource evaluation, development and security of resources for the future. IRM has also dedicated its staff to the ongoing development of emerging technologies related to water and wastewater conveyance, treatment and disposal.



Integrated Resource Management, Inc.
405 North Indian Hill Boulevard
Claremont, CA 91711-4600

Phone: (909) 621-1266
Fax: (909) 621-1196
Email: info@irmwater.com
<http://www.irmwater.com>



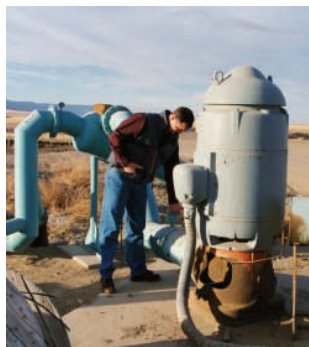
**Integrated
Resource
Management, Inc.**



Public and Private
Water Management Consultants

Why do I need a Water Quantity Management Program?

Fresh water will soon be **more valuable than oil**. It is rapidly becoming as scarce. Nearly half the country is currently in the grip of a **500-year drought**. For the rest of us, water supplies can no longer expand to meet demand, and so municipal water rates are rising, while at the



IRM inspecting a well during an regularly scheduled visit to a client.

same time there is a renewed push to regulate private withdrawals, especially in threatened basins.

Since industrial water users are usually **last in line**—behind agriculture and municipalities—for water rights and prioritized

beneficial uses, a sufficient water supply is rapidly becoming a major concern for many industries.

Also like oil, water is non-renewable. Though the amount of water on the planet remains the same, the amount of *usable* water has been rapidly decreasing due to **over-consumption and contamination**. Therefore, the volume and constituent (pollutant) load of industrial wastewater has become a target for increasingly stringent discharge requirements.

However, given this volatile environment, opportunities exist to **maximize potential profits** from one's water and wastewater resources. Hitherto ignored **water rights** have become increasingly valuable as the need for access to fresh water supplies grows across the nation. Also, many states and local communities are implementing **waste stream trading** "markets" where cleaner industries "sell" pollution "credits" to less clean industries—creating economic incentives for pollution prevention and wastewater treatment.

Remaining unaware of the risks and benefits attached to the quantities of water going in and out of an industrial facility could lead to unnecessary regulatory oversight, utility overcharges, and unclaimed water assets. A Water Quantity Management Program provides a facility with **continuous control and optimization** of its source water and wastewater systems.

How will IRM implement my Water Quantity Management Program?

Integrated Resource Management, Inc. (IRM) is an industry leader in conducting comprehensive water quantity assessments and directly managing, maintaining and optimizing industrial water systems. Our team of experienced water experts has **saved our clients millions of dollars** in avoided fines as well as discovered or easily perfected water assets. IRM's industrial clients range from food manufacturers to aggregate mining companies, spanning all major sectors of the economy. In addition, IRM provides consulting services to states, cities, water districts and associations, and represents clients on various regional water management and watermaster boards.

IRM offers the following services as part of its complete Water Quantity Management Program package:

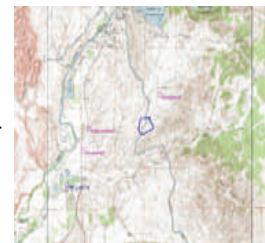
Valuation

- Research and review all public and private records concerning historical water rights, permits, allocations, shares, adjudications and judgments associated with the property.
- Evaluate water right quantity, seniority, location, transferability, and "beneficial use" or "reasonable use" basis for claim.
- Research and review the local Total Maximum Daily Loads (TMDLs) and waste stream trading programs.
- Conduct a full-scale valuation of the facility's water and wastewater assets based on a location-specific market analysis.
- Advise on impending changes to water laws and agreements that impact facility assets.

Maintenance

- Identify, develop, perfect and properly file existing and/or additional groundwater and surface water rights.

- Resolve water rights disputes.
- Monitor and review utility billing and rate structure for inconsistencies, unnecessary water connections, avoidable surcharges, etc.
- Negotiate reduced block rates with local water and wastewater utilities.
- Propose and implement facility-specific water conservation measures, as well as state-of-the-art water reuse and recycling systems.



Among other public and private documents, IRM reviews hydrogeological survey maps for clients.

Communications

- Represent client in local regulatory and judicial review processes, and serve as an expert witness in litigation.
- Oversee all correspondence with regulatory agencies, journalists, renters, vendors, customers and/or the public (via direct mailings) regarding water issues.
- Apply for awards and certifications from trade groups and watchdog organizations that recognize facility efforts to achieve regulatory compliance and environmental stewardship goals.
- Give presentations to facility personnel on water issues directly relevant to operational efficiency and compliance.
- When needed, bring on board a highly qualified and experienced network of hydrologists, hydrogeologists, engineers and attorneys specializing in the water field.

**At IRM, we are committed
to the safety and security
of your water system.**

Integrated Resource Management, Inc.



405 North Indian Hill Boulevard
Claremont, CA 91711-4600

Phone: (909) 621-1266
Fax: (909) 621-1196
Email: info@irmwater.com
<http://www.irmwater.com>